

ISSUE 31

SEPTEMBER 2019

PORTFOLIO



MPAS AWARDS 2018
—
LUXURY MEDIA
OF THE YEAR
—
SILVER

ROOM TO GROW

LOH LIK PENG | JULIEN ROYER | ANDREW AND DESMOND LEONG
COWORKING SPACES
THOMAS BEATTIE | GREGORY CROUZEIX | LEE GIL-RAE

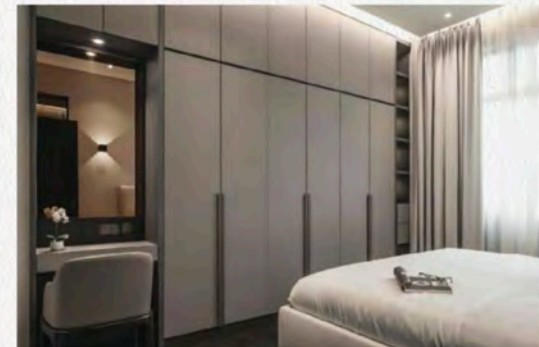
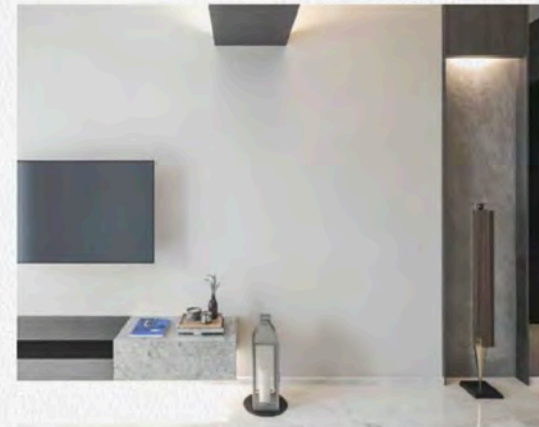


IMPRESSION

EASY LUXE

DESIGN

BY VICTOR CHEN



PHOTOGRAPHY BY JONATHAN DANKER

A young couple acquired this two-bedroom apartment in the eastern part of Singapore to be their first home. Although it answered most of their requirements, the unit clearly needed a facilities upgrade and a design update. This brought them to local design practice Right Angle Studio to find out how to introduce touches of discreet, contemporary luxury.

Right Angle Studio principal designer Mr. Alex Liu recommended a spatial reorganization that called for tearing down a kitchen wall and integrating the space to the dining area. He then reoriented the access to the kitchen and created further entrances to the adjoining helper's room and the storage room behind it. Mr. Jay Liu, meanwhile, designed some custom furniture for the revamped space, including a very interesting dining table. Working with a narrow palette of neutral colors and burnished gold, they introduced stone, wood and metal textures to some of the walls and further amplified their effect with the use of mirrors.

The masterstroke in this renovation is the transformation of the passage from the main door to the living space. Mr. Alex Liu lowered the ceiling and covered one wall with dark wood and the other with large mirror panes. This created a high contrast between the passage and the living area, resulting in a dramatic transition. The mirrored wall further expanded the breadth of the corridor.

The living space, bedrooms, powder room and master bathroom were all streamlined. Unnecessary details were torn down and the textures unified. The resulting apartment is much more sophisticated. Although it did not gain much in footprint, it reaped a handsome reward in terms of style. □